



中国林业出版社

: 570102K

2022 8

1
2
2
2
2
2
2
2
3
3
4
5
5
6
16
22
23
25
29
32
32
34
39
40
42

43

43

44

47

48

49

50

50

50

1.

" + "

2022

2.

" "

" "

3.

4.

570102K

3-5

57	5701	83	2-08-04-00		

	1.	1. 2. 3. 4. 5. 6.	

	2.	1. 2. 3. 4.	
	3.	1. 2. 3. 4. 5.	
	4.	1. 2. 3.	

1.

(

" "

2.

1

2

3

4

3-6

5

6

8 7

8

	1	:2	3
1			
2			
3			
4			
5			
6			
7			
8			

b }

1 3 i i

							steam
							STEAM

1.

3. 1
2
3 m̃
4
5

6

" " " "

£

1. 1
2 m̃

3 54 3

" "
"
" "
"
" "

3. 1
2 3
4
5
6

4 16 1

· & §

P

1.

2.

3.

1 60 3

4.

~

V N&E&5& "Ö q

FEE €Ó Á'XPP F4E-3 μ q

1.

1

3exò 9ñ

p q r 270 p300 q p

0

p

					<p>1. 1 2</p> <p>3</p> <p>2. 1 2 3</p> <p>3. 1 2</p> <p>3</p>	
3		60	3		<p>24</p> <p>1. 1</p>	<p>1. 800</p> <p>1000</p> <p>2.</p>

					2	
					3	
					2.	
					1	
			1.			
			2		2	
					3	
			3.			
			4.		3.	
					1	
					2	

3.

1		32	1. 5			
2		32	1. 5			
3		32	1. 5			

4		32	1. 5			
5		32	1. 5			
6		32	1. 5		:	

1		62	3			

2		32	1. 5			
3		32	1. 5			
4		68	3		0-6	
5		64	3			

6		66	3			
7		60	3			

	--					
8	--	32	1. 5			
9	--	60	3			
10	--	30	3			
11	--	30	1. 5			
12		30	1. 5			

	--					
13		30	1. 5			
14		30	1. 5			
15		30	1. 5			
16		32	2			
17		62	3			
18		62	3			

19		62	3			
20		32	1. 5			
21		94	4. 5			
22		62	3			

5

23		32	1. 5			

1 15 8 / /
0

0

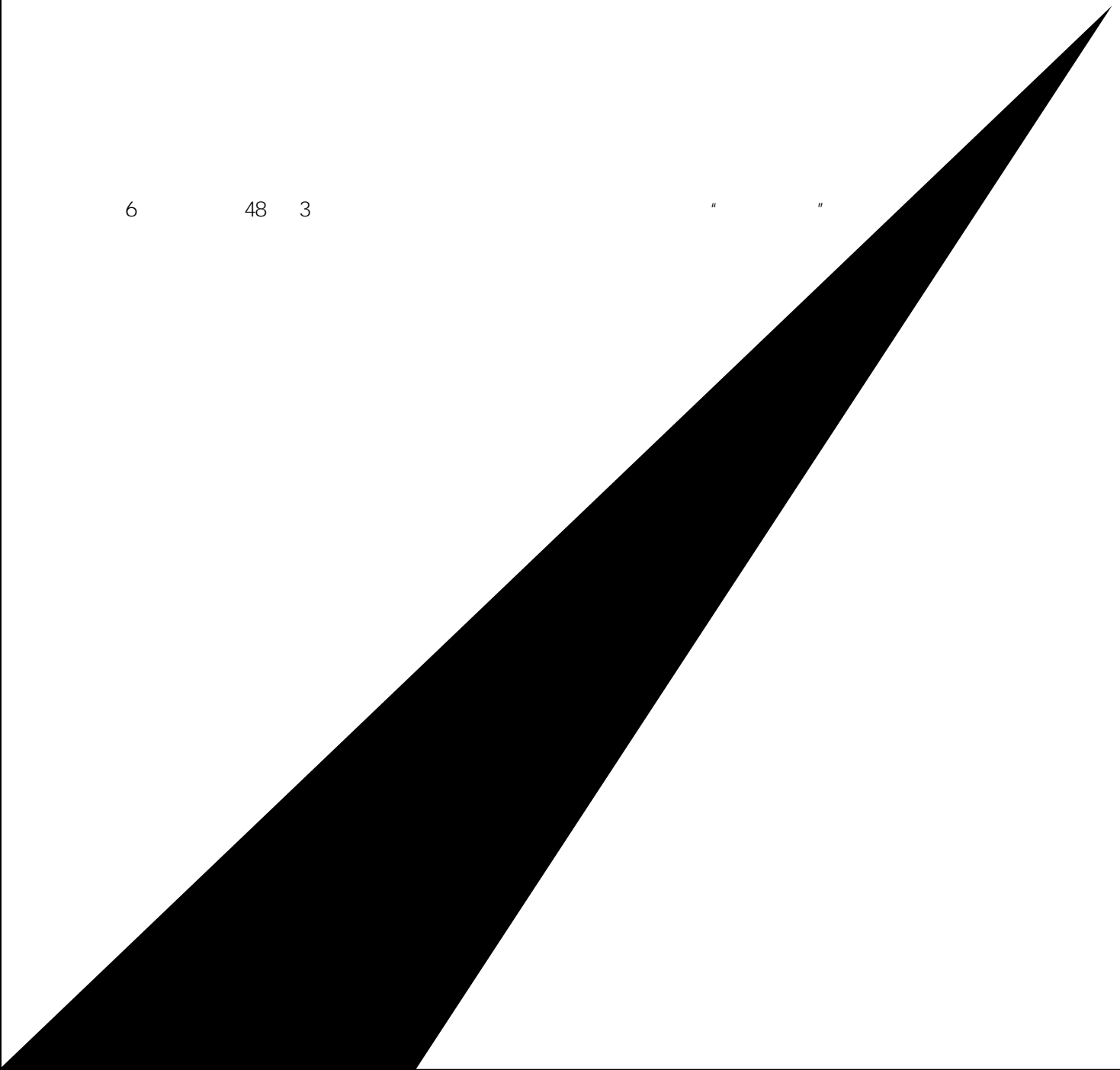
0

4 8 15 8
0

5 15 8
0

6 48 3

" "



2

1		36	2		1. 2. 1. 2. 3.	1. 2. 3. 1. 2. 3.

3.

1		18	1		1. 2. 3. 1. 2. 3.	1. 2. 1. 2.

4.

1		90	3			
---	--	----	---	--	--	--

2		60	1			
3		60	2			
4		480	16			
5		60	2			

1

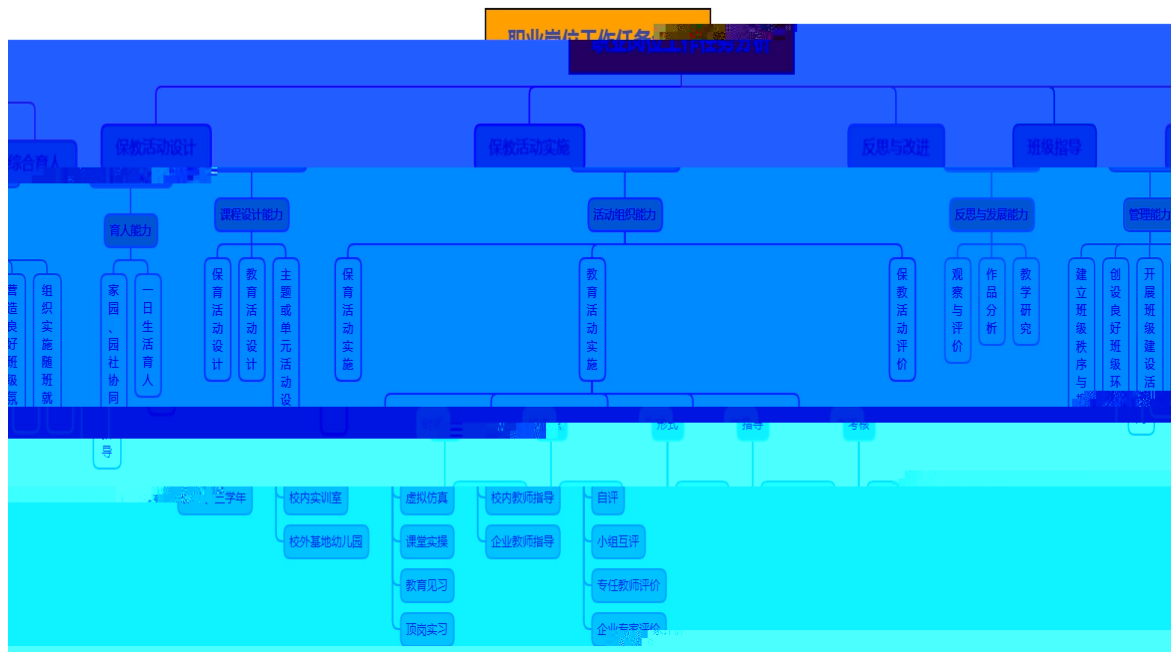
50%

"

"

"

2



3

--	--	--	--	--

		()			
				20	12
				60	1
				54	12
				30	12
				32	3
				32	4
				32	4
				32	5
				14	4
				14	1
			30	1 2	
			6	3 4	
			32	3	
			62	1 2 3 4	
			62	1 2 3 4	

		()						
				62		1 2 3 4		
				14		3		1+X
				6		4		1+X
				6		4		1+X
				120		4 5		
				6		4		
				12		3 4		1+X
				12		4		
				90		3 4		
				480		6		

		()						
				34		4		
				120		3 4 5		
				120		3 4 5		
				34		5		
		Steam	Steam	6		5		

1.

2.

3.

1.

"

"

2.

1

2

3

4

5

1

9

2

10

\

11

\

3 " "

12

\

1

\

4

12

\

1

4

4

\

2

5

\

3

	2 " "			11	\
	3			12	\
	1 " "	" "		3	\
				4	
	2			5	\
				5	\
				5	\
	1			12	\ \ \
	2			11-12	
	1" .	" " ---		5	
	" "	" "		6	
		" "		6	
	2" .			6	\ \

	1		7-8		
	2		1-2		
	1				
	2				
	3				
	4				\
					\
					\
					\
					\
	5				
	1			\	
	2		\6	\	
			11-12	\	
3		3 9	\		

	2022. 09- - 2023. 01	1	2	1	0	14	18	4	22

	2023. 02- - 2023. 07			1	1	19	21	8	29
	2023. 09- - 2024. 01			1	1	19	21	5	26
	2024. 03- - 2024. 07			1	1	17	19	7	26
	2024. 09- - 2025. 01			1	1	18	20	5	25
	2025. 02- - 2025. 07			1	1	18	20	8	28

						()												
			Mxfz	A	3	1	48	32	16	32						4-11	4	16, 1
			Mzds	A	2	2	32	32		32						1-8	4	
			Mxsx	A	3	2	54	32	22	32						11-18	4	22
			Mszc	A	1	1/2	16	16		8	8					4	12-13	9-10
			Mggc	A	1	1	16	16		16						14-18	4	+
	--		Xgfjy	A	2	1	36	36	2W	36						2	36	
	--		Xldjy	A	1	1	18	18		18								+
	--		Xcxsy	A	1	1	18	18		18								
			Gdxy	B	3	1	2	60	6	54	28	32						0.5
			Gdxyw	A	3	1	2	60	60		28	32						
			Gdxyy	A	3	1	2	60	60		28	32					2/3/4	5/6

			Rj szy	A	1.5	1		32	32	0				30			
			Rkyff	B	1.5		5	30	20	10					30		
			Retwx	B	1.5		5	60	30	30				30	30		
			Rxqxl	A	3	2		68	68	0		68					
			Rxqj y	A	3	3		64	64	0			64				
			Rxqvš	B	3	12		66	54	12		34	32				
			Ryej y	A	1.5		3	32	32				32				
			Rxqxl	A	1.5	3		32	32	0			32				
			Ryeyx	B	1.5		4	32	20	12			32				
		---	Rkxj y	B	3	5	4	60	30	30				30	30		
		---	Rj kj y	B	1.5	4		32	20	12				30			
		---	Ryeyy	B	3	5	4	60	40	20				30	30		
		---	Rshj y	B	1.5		5	30	20	10					30		
		---	Ryyhd	B	1.5		4	30	20	10				30			
		---	Rmšj y	B	1.5		5	30	20	10					30		
			Ryexw	B	1.5		5	30	20	10					30		
			Rhj cs	B	1.5		5	30	14	16					30		
			Rbj gl	A	1.5	4		30	30	0					30		
			Rj ydc	C	1								30		30		
			Rj yj x	C	3		34	90		90			30	60			
			Rgqzh	C	2			60		60					60		

			Rj ysx	C	16		6	480		480					480			
			Rbysj	C	2		6	60		60					60			
					85			1990	830	1160								
			Raefy	B	2		5	32	16	16			32					
			Rgqj x	B	3		45	60	30	30			30	30				
			Rxqsy	B	3		34	60	20	40			30	30				
			Rgj th	B	1.5		3	32	16	16			32					
		0-3	Rqzj y	B	3		45	60	30	30			30	30				
			Rdzfz	B	1		3	16	8	8			16					
			Ryyfz	B	1		3	16	8	8			16					
			Raefy	B	1.5		4	30	14	16			30					
			Rxmxq	B	2		3	32	16	16			32					
			Rzsta	B	1.5		3	32	16	16			32					
			Rxqbh	B	1.5		3	30	14	16			30					
			Rzssc	B	1.5		45	60	20	40			30	30				
			Rnj yl	B	2		3	32	32	0			32					
			Rnkxw	B	1.5		4	30	14	16				30				
			Rnsxj	B	3		34	62	30	32			32	30				
			Rmr cs	B	1.5		4	30	14	16			30					
			Ryyyy	A	2		3	32	16	16			32					
			Ryyky	B	3		34	62	30	32			32	30				
			Ryyby	B	1.5		5	30	10	20				30				
			Ryyj x	B	1.5		4	30	10	20			30					
	Rzj yg	B	2		4	28	14	14			28							

		(%)		(%)	
	198	6.8	9	6.5	
	408	14	27	16.4	108 6 2 1) 108 8
	108	3.7	8	5.4	
			6	4	
	704	24.5	50	32.5	
	680	23.4	30.5	20.8	
	1310	45	57.5	38.9	
	1990	68.4	85	59.7	
	212	5.1	12	6.6	
	60	2	4	2.2	
	272	7.1	16	8.8	
	2966	100	151	100	
	1486	50.1			() 1/2
	1480	49.9			()
		1: 1.004			

()

1

2

Rxqj y	A	3	4		48		48		48
Rxqxl	A	4	3	2	64		64	32	32
Rvøbj	A	4	3	2	64		64	32	32
Rj sky	B	4		23	32	32	64	32	32
Ryej y	B	2	3		32		32		32

c

		1. 4 2.	6
1+X			
		1. 2.	
		1. 2. 6. 2	
	" "	1. 4 2.	
	2		

1.

2

6

1+X

3.

4.

5.

30%

1

18: 1

45

22

2

		35- 55		1. 2. 3. / 4.	1. 2. 3.	2
		30- 45		1. 2. 1 3. 1 4. 5.	1. 2. 3. 4. 5.	8
		25- 55		1. 2. 6 3. 1 4.	1. 2. 3. 4. 5. 6. 7.	13

		30-60		1. 10 2.	1. 2. 3. 4.	12
		30-60		1. 5 2. 3.	1. 2. 3.	2
		30-60		1. 5 2. 3. 4.	1. 2. 3.	8

1

1		41 102	99			
2		32	1			
3		1	5			

4			2			
5		8 4 1	1			
6		40 1	1			
7		40 1	2			
8			2			
9		1 1	1			

2

1				20
2				18
3				14
4				18

2

3

1

5

1

9787564824693

43

2

978756483270401

ix

8	--	9787040512267	3			44
9	--	9787040505801	3			28
10	--	978756483381701				39

2

1		1. 2. 1+X 3.	
2		1. 2.	
3		1. 2. 3.	
4			
5			

--			

1

2

1

40%

30%

50%

2

60%

70%

50%

3

1

1

2

3

2

1.

2.

151

50

85

16

3.

1

2

3

		50			
		48			
		47			
		49			
		46			
		44			
		30			
		42			
		46			
		46			
		50			
		44			
		58			
		44		—	
		52			
		52			

	22		
()			
:			
:			
:			
